



Direct drive, single inlet centrifugal fan, prepared to convey air at 400°C/2h. Manufactured from steel sheet protected with cataforesis primer + polyurethane paint finish. Designed to continuously circulate air from -20°C up to 100°C.

Motors

2, 4 or 6 pole, IE 3 high efficiency, three-phase 230/400V 50Hz up to motor size 112 and 400/690V 50Hz for higher motors. IP55, Class F protection.

On request

- 2-speed motors.
- 60 Hz versions.
- Painted in different RAL colour.
- Inspection door, draining.



Specific applications



Approved to EN12101-3 standard 0370-CPD-5483



Continuous



Car parks



Industrial kitchens



Backward curved impeller

TABLE OF APPLICATIONS	
Air Type	Dust quantity (mg/m ³)
Clean air	<50

BACKWARD CURVED IMPELLER - DIRECT DRIVE

CXRT-N F400 Serie



TECHNICAL FEATURES

Please, check that electrical features (voltage, current, frequency, etc.) are suitable with your installation.

Model	Motor size	Speed (r.p.m.)	Motor power (kW)	Maximum absorbed current 400V (A)	Maximum airflow (m ³ /h)	Sound pressure level at 1 m [dB(A)] ⁽¹⁾	Weight (kg) ⁽²⁾	Moment of inertia (kg·m ²) ⁽³⁾
2 POLE								
CXRT-N 251/2	71B2	2820	0,55	1,25	2.690	69	32	0,035
CXRT-N 281/2	80B2	2840	1,10	2,33	3.850	72	41	0,055
CXRT-N 311/2	90L2	2850	2,20	4,43	5.510	76	51	0,090
CXRT-N 351/2	100LA2	2900	3,00	5,77	8.350	79	79	0,150
CXRT-N 402/2	112M2	2910	4,00	7,50	10.100	82	94	0,270
CXRT-N 401/2	132SA2	2890	5,50	10,1	12.170	84	106	0,270
CXRT-N 452/2	132SB2	2890	7,50	13,9	14.360	85	123	0,480
CXRT-N 451/2	160MB2	2930	11,00	18,7	17.410	88	158	0,480
4 POLE								
CXRT-N 401/4	80A4	1370	0,55	1,26	5.770	64	73	0,270
CXRT-N 451/4	90S4	1390	1,10	2,30	8.260	67	92	0,480
CXRT-N 502/4	90L4	1400	1,50	3,15	9.540	68	121	0,830
CXRT-N 501/4	100LA4	1420	2,20	4,56	11.690	71	128	0,830
CXRT-N 562/4	100LB4	1430	3,00	6,15	13.640	71	131	1,330
CXRT-N 561/4	112M4	1425	4,00	8,20	16.450	74	136	1,330
CXRT-N 632/4	132SA4	1440	5,50	10,30	19.670	75	184	2,180
CXRT-N 631/4	132MA4	1450	7,50	13,90	23.950	78	197	2,180
CXRT-N 712/4	160M4	1450	11,00	20,70	28.280	79	292	3,830
CXRT-N 711/4	160L4	1450	15,00	28,40	32.860	82	292	3,830
CXRT-N 802/4	180M4	1460	18,50	34,90	40.880	82	380	7,000
CXRT-N 801/4	180L4	1470	22,00	40,90	48.440	85	380	7,000
CXRT-N 902/4	225S4	1475	37,00	65,60	59.000	85	629	11,800
CXRT-N 901/4	225M4	1475	45,00	79,40	67.630	88	648	11,800
6 POLE								
CXRT-N 562/6	90S6	930	0,75	1,95	10.740	59	120	1,330
CXRT-N 632/6	100LA6	950	1,50	3,71	15.690	65	164	2,180
CXRT-N 631/6	112M6	950	2,20	5,94	12.980	68	171	2,180
CXRT-N 712/6	132SA6	950	3,00	8,10	21.750	69	275	3,830
CXRT-N 711/6	132MA6	960	4,00	7,30	18.530	72	275	3,830
CXRT-N 802/6	132MB6	960	5,50	12,80	31.800	72	336	7,000
CXRT-N 801/6	160M6	965	7,50	14,70	26.880	75	347	7,000
CXRT-N 902/6	160L6	965	11,00	21,50	38.600	75	459	11,800
CXRT-N 901/6	180L6	970	15,00	30,40	44.470	78	498	11,800
CXRT-N 1002/6	200LR6	970	18,50	37,30	52.380	79	695	19,500
CXRT-N 1001/6	200L6	970	22,00	43,00	63.580	82	715	19,500
CXRT-N 1122/6	225M6	975	30,00	54,20	75.210	82	1.070	33,500
CXRT-N 1121/6	250M6	980	37,00	66,60	87.990	85	1.210	33,500
CXRT-N 1252/6	280M6	980	55,00	102,00	104.960	85	1.474	59,500
CXRT-N 1251/6	315S6	985	75,00	136,00	127.020	88	1.594	59,500
CXRT-N 1402/6	315M6	985	90,00	163,00	147.160	89	2.037	105,000
CXRT-N 1401/6	315MA6	985	110,00	199,00	181.470	92	2.092	105,000

¹ Piping only on outlet side.

Noise level tolerance +3 dB/A, measured in the maximum efficiency point.

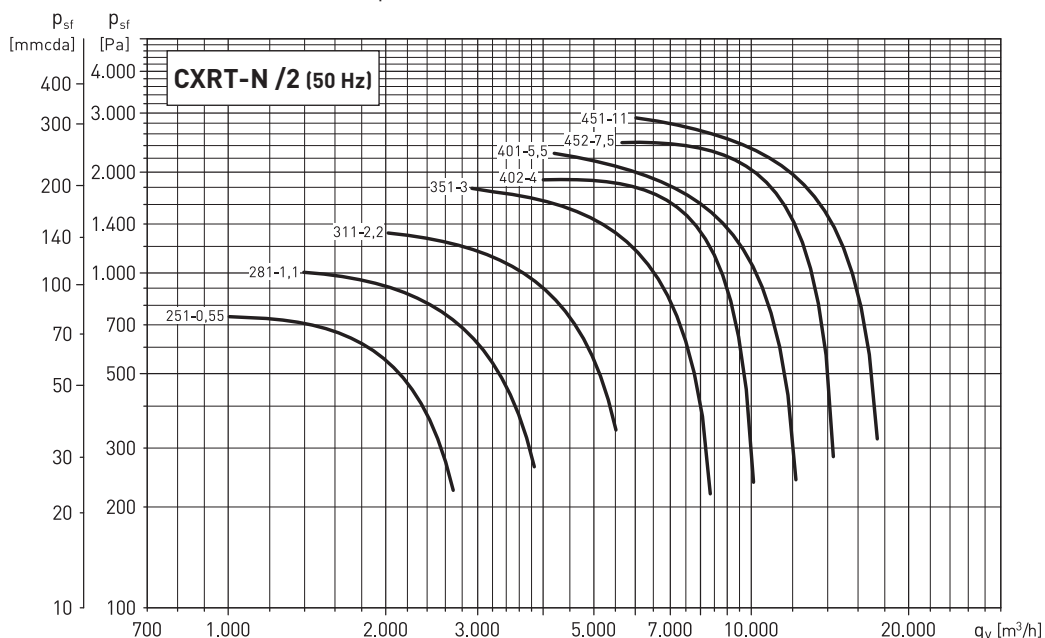
² With motor included and for LG270 or RD270 position.

³ Impeller's moment of inertia.

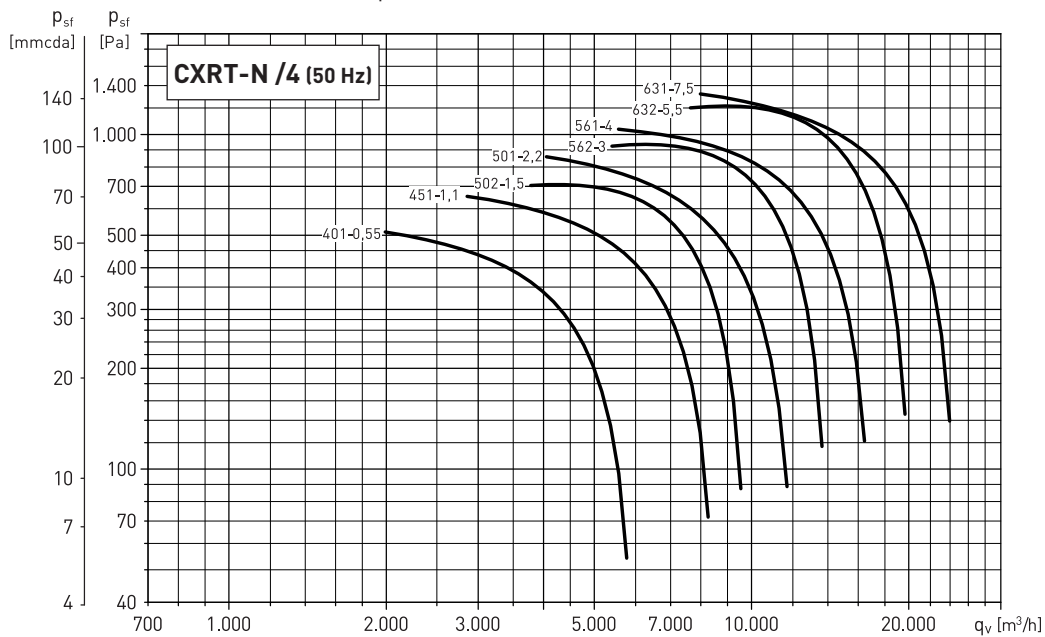
PERFORMANCE CURVES (at outlet)

- Air volume in m³/h.
- **Psf: Static pressure in Pa.**
- Model - Motor power in kW.
- Example: 451 - 11
 Model - kW

2 pole - Models from 251 to 451

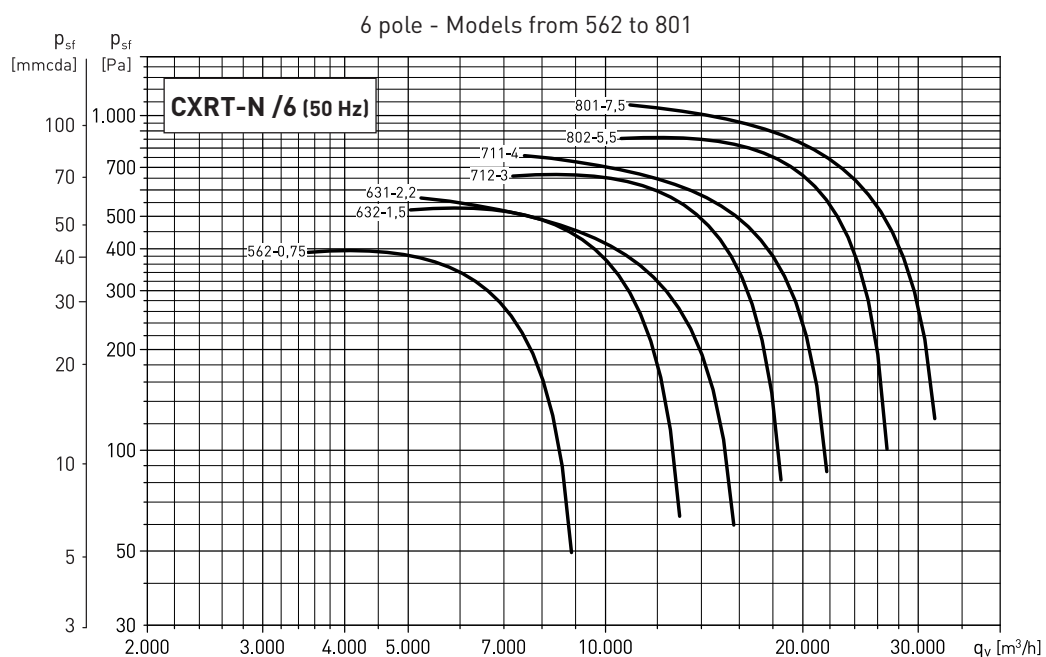
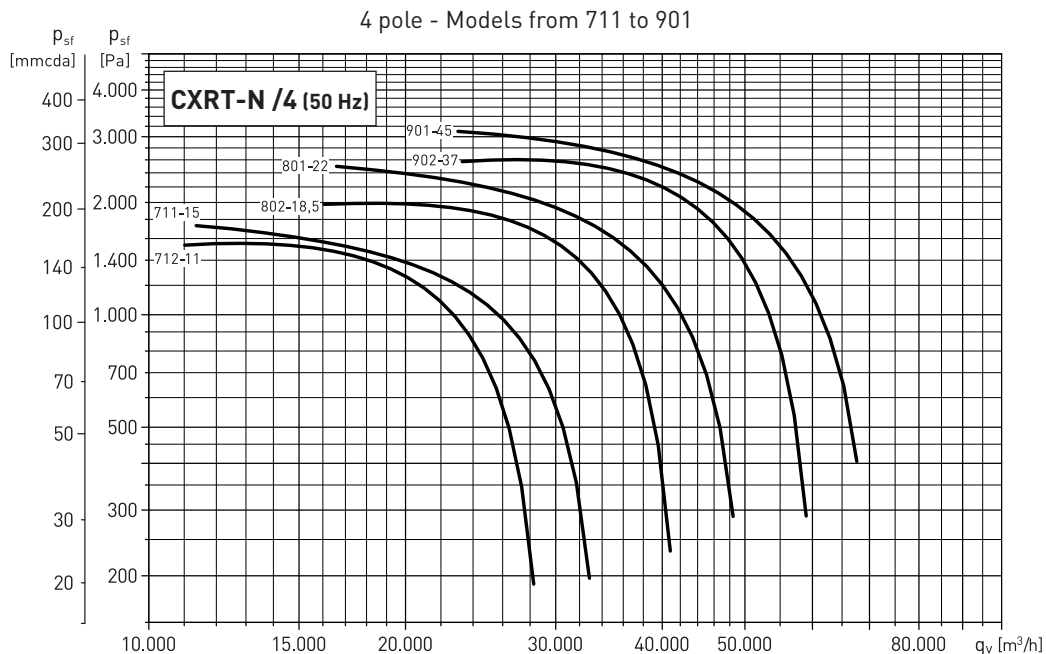


4 pole - Models from 401 to 631



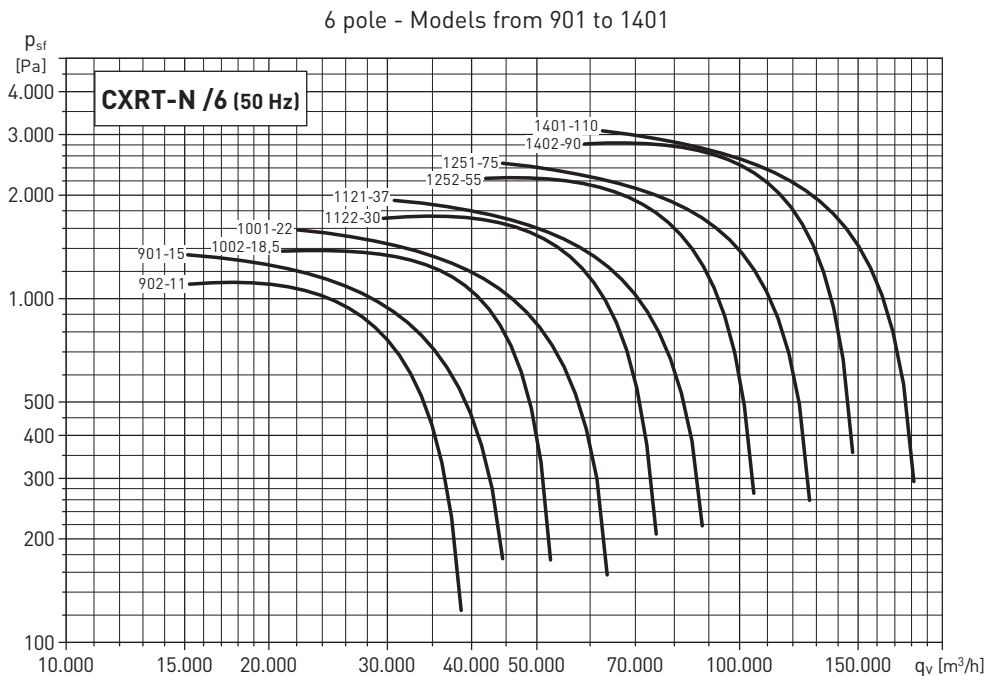
PERFORMANCE CURVES (at outlet)

- Air volume in m³/h.
- **P_{sf}**: Static pressure in Pa.
- Model - Motor power in kW.
- Example: 801 - 22
 Model - kW



PERFORMANCE CURVES (at outlet)

- Air volume in m³/h.
- **Psf: Static pressure in Pa.**
- Model - Motor power in kW.
- Example: 901 - 11
 Model - kW



ERP data

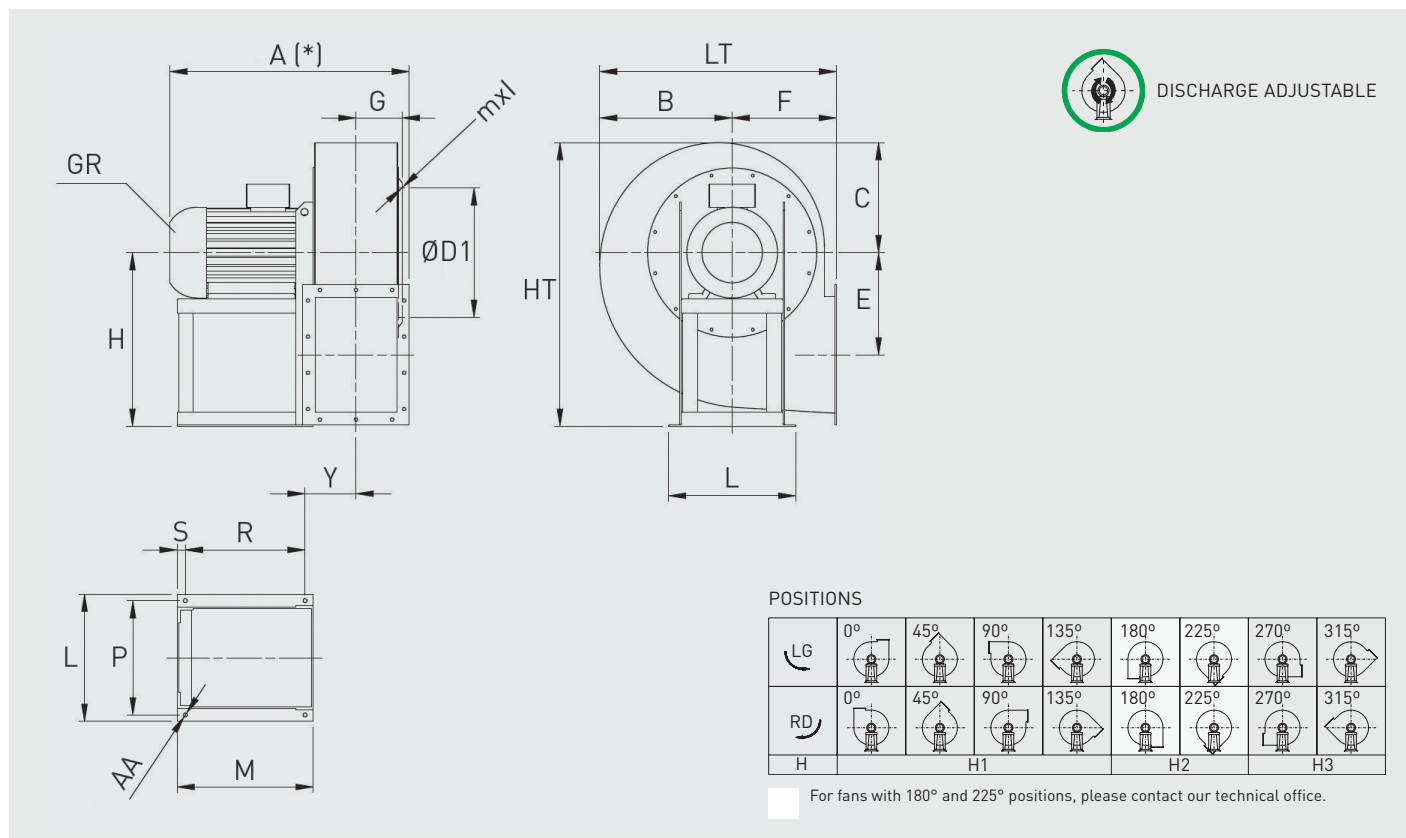
Model	PM	MC	EC	VSD	SR	η [%]	N	[kW]	[m ³ /h]	[Pa]	[RPM]
CXRT-N 251	0,55	B	total	No	1	57,6	71,0	0,534	1.643	673	2820
CXRT-N 281	1,10	B	total	No	1	63,3	74,2	0,910	2.375	872	2840
CXRT-N 311	2,20	B	total	No	1	66,5	74,6	1,669	3.436	1162	2850
CXRT-N 351	3,00	B	total	No	1	68,1	73,3	3,252	5.209	1531	2900
CXRT-N 402	4,00	B	total	No	1	76,4	80,1	4,467	7.204	1706	2910
CXRT-N 401	5,50	B	total	No	1	70,7	73,2	5,765	7.583	1935	2890
CXRT-N 452	7,50	B	total	No	1	78,6	79,7	7,760	10.225	2147	2890
CXRT-N 451	11,00	B	total	No	1	72,0	72,1	10,025	10.700	2429	2930
CXRT-N 401	0,55	B	total	No	1	62,6	74,5	0,741	3.675	454	1370
CXRT-N 451	1,10	B	total	No	1	67,0	76,2	1,326	5.323	601	1390
CXRT-N 502	1,50	B	total	No	1	74,4	82,3	1,769	7.014	675	1400
CXRT-N 501	2,20	B	total	No	1	69,2	76,3	2,091	7.234	720	1420
CXRT-N 562	3,00	B	total	No	1	76,6	82,2	2,976	9.733	843	1430
CXRT-N 561	4,00	B	total	No	1	70,3	74,7	3,879	11.162	880	1425
CXRT-N 632	5,50	B	total	No	1	73,3	76,1	5,385	12.033	1181	1440
CXRT-N 631	7,50	B	total	No	1	73,3	75,3	6,474	15.641	1092	1450
CXRT-N 712	11,00	B	total	No	1	80,2	80,3	10,007	20.220	1429	1450
CXRT-N 711	15,00	B	total	No	1	74,2	74,1	12,169	22.408	1452	1450
CXRT-N 802	18,50	B	total	No	1	82,5	81,9	17,895	28.991	1833	1460
CXRT-N 801	22,00	B	total	No	1	75,8	74,9	23,624	32.147	2005	1470
CXRT-N 902	37,00	B	total	No	1	83,7	82,5	32,164	41.772	2320	1475
CXRT-N 901	45,00	B	total	No	1	76,4	74,9	40,528	44.185	2521	1475
CXRT-N 562	0,75	B	total	No	1	68,8	79,7	0,922	6.354	359	930
CXRT-N 632	1,50	B	total	No	1	66,6	74,9	1,646	8.301	476	950
CXRT-N 631	2,20	B	total	No	1	67,7	75,2	1,912	10.142	459	950
CXRT-N 712	3,00	B	total	No	1	74,8	80,2	3,081	13.343	622	950
CXRT-N 711	4,00	B	total	No	1	70,0	74,6	3,653	14.710	626	960
CXRT-N 802	5,50	B	total	No	1	80,2	83,0	5,373	19.229	806	960
CXRT-N 801	7,50	B	total	No	1	73,7	75,2	7,093	21.322	882	965
CXRT-N 902	11,00	B	total	No	1	81,2	81,4	9,482	27.519	1007	965
CXRT-N 901	15,00	B	total	No	1	74,3	74,2	12,086	29.258	1105	970
CXRT-N 1002	18,50	B	total	No	1	83,7	83,2	16,132	37.461	1297	970
CXRT-N 1001	22,00	B	total	No	1	76,9	76,2	19,912	40.588	1357	970
CXRT-N 1122	30,00	B	total	No	1	84,9	83,8	28,053	53.614	1598	975
CXRT-N 1121	37,00	B	total	No	1	77,4	76,1	33,715	58.243	1612	980
CXRT-N 1252	55,00	B	total	No	1	86,8	85,1	48,285	75.380	2002	980
CXRT-N 1251	75,00	B	total	No	1	79,4	77,5	59,607	80.633	2114	985
CXRT-N 1402	90,00	B	total	No	1	87,9	85,6	85,766	105.699	2568	985
CXRT-N 1401	110,00	B	total	No	1	79,6	77,1	103,009	114.459	2580	985

PM	Motor power
MC	Measurement category
EC	Efficiency category
VSD	Speed control: supplied with the fan
SR	Specific ratio
η [%]	Total efficiency
N	Efficiency
[kW]	Absorbed power
[m³/h]	Airflow
[Pa]	Total pressure
[RPM]	Speed

BACKWARD CURVED IMPELLER - DIRECT DRIVE CXRT-N F400 Serie



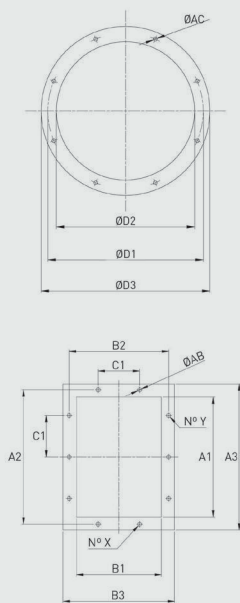
DIMENSIONS (mm) (models from 251 to 501)



Type		Fan											Base									
Fan	Motor GR	A*	B	C	Ø D1	E	F	G	H			HT	mxl	Y	LT	L	P	M	R	S	Ø AA	
CXRT-N 251/2	71B2	435	245	210	292	150	195	93	315	195	315	525	M8X20	139	440	225	203	215	156	14	10	
CXRT-N 251/2	80A2	449	245	210	292	150	195	93	315	195	315	525	M8X20	139	440	225	203	225	166	14	10	
CXRT-N 281/2	80B2	485	270	235	332	171	200	104	375	200	375	610	M8X20	150	470	225	203	225	166	14	10	
CXRT-N 311/2	90L2	550	300	260	366	196	225	116	400	225	400	660	M8X20	178	525	260	234	260	183	17	10	
CXRT-N 351/2	100LA2	610	340	295	405	215	255	129	450	255	450	745	M8X20	154	595	324	289	295	249	23	12	
CXRT-N 401/2	132SA2	735	375	330	448	243	285	146	500	285	500	830	M8X20	170	660	372	337	360	314	23	12	
CXRT-N 401/4	80A4	570	375	330	448	243	285	146	500	285	500	830	M8X20	192	660	225	203	225	166	14	10	
CXRT-N 402/2	112M2	680	375	330	448	243	285	146	500	285	500	830	M8X20	170	660	324	289	310	264	23	12	
CXRT-N 451/2	160MB2	860	425	370	497	273	320	162	560	320	560	930	M8X25	193	745	440	395	470	414	28	14	
CXRT-N 451/4	90S4	640	425	370	497	273	320	162	560	320	560	930	M8X25	225	745	260	234	260	183	17	10	
CXRT-N 452/2	132SB2	770	425	370	497	273	320	162	560	320	560	930	M8X25	188	745	372	337	360	314	23	12	
CXRT-N 501/4	100LA4	715	470	410	551	301	360	182	600	360	600	1010	M8X25	208	830	324	289	295	249	23	12	
CXRT-N 501/6	80B6	640	470	410	551	301	360	182	600	360	600	1010	M8X25	230	830	225	203	225	166	14	10	
CXRT-N 502/4	90L4	680	470	410	551	301	360	182	600	360	600	1010	M8X25	245	830	260	234	260	183	17	10	
CXRT-N 502/6	80B6	640	470	410	551	301	360	182	600	360	600	1010	M8X25	230	830	225	203	225	166	14	10	

¹ With cooling impeller.
* Depending on motor size.

DIMENSIONS (mm) (models from 251 to 501)



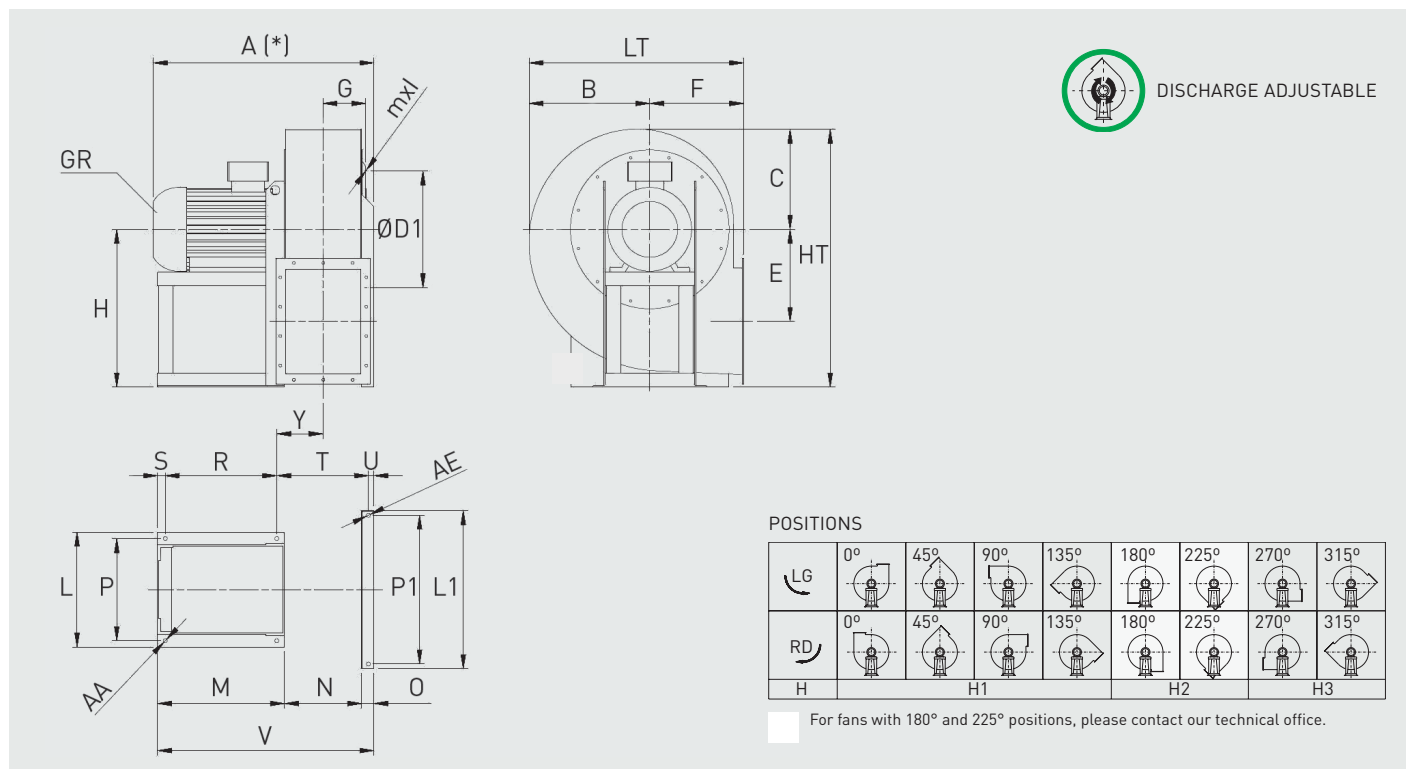
Model	Inlet flange					
	Bride type	Ø D1	Ø D2	Ø D3	Ø AC	Holes
251	250	292	254	324	10	8
281	280	332	285	365	10	8
311	315	366	320	400	10	8
351	355	405	360	440	10	8
401	400	448	405	485	10	12
451	450	497	455	535	10	12
501	500	551	505	585	10	12

Model	Discharge flange										
	Bride type	A1	B1	A2	B2	A3	B3	C1	Ø AB	N°X	N°Y
251	250x180	256	183	292	219	326	253	112	12	2+2	3+3
281	280x200	288	205	332	249	368	285	125	12	2+2	3+3
311	315x224	322	229	366	273	402	309	125	12	2+2	3+3
351	355x250	361	256	405	300	441	336	125	12	2+2	3+3
401	400x280	404	288	448	332	484	368	125	12	3+3	4+4
451	450x315	453	322	497	366	533	402	125	12	3+3	4+4
501	500x355	507	361	551	405	587	441	125	12	3+3	4+4

BACKWARD CURVED IMPELLER - DIRECT DRIVE CXRT-N F400 Serie

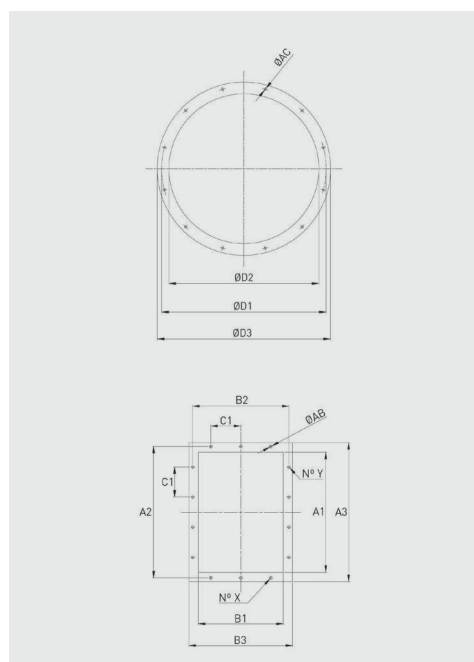


DIMENSIONS (mm) (models from 561 to 631)



Type		Fan											Base																
Fan	Motor GR	A*	B	C	Ø D1	E	F	G	H			HT	mXl	Y	LT	L	P	L1	P1	M	N	O	R	S	T	U	V	Ø AA	Ø AE
								H1			H2			H3															
CXRT-N 561/4	112M4	810	525	455	629	331	400	207	670	400	670	1125	M8X30	229	925	324	289	672	632	310	410	52	264	23	462	23	772	12	17
CXRT-N 561/6	90L6	735	525	455	629	331	400	207	670	400	670	1125	M8X30	266	925	260	234	672	632	260	410	52	183	17	499	23	722	10	12
CXRT-N 562/4	100LB4	770	525	455	629	331	400	207	670	400	670	1125	M8X30	229	925	324	289	672	632	295	410	52	249	23	462	23	757	12	17
CXRT-N 562/6	90S6	735	525	455	629	331	400	207	670	400	670	1125	M8X30	266	925	260	234	672	632	260	410	52	183	17	499	23	722	10	12
CXRT-N 631/4	132MA4	915	590	515	698	375	450	232	750	450	750	1265	M8X30	255	1040	372	337	762	702	360	461	52	314	23	513	23	873	12	17
CXRT-N 631/6	112M6	855	590	515	698	375	450	232	750	450	750	1265	M8X30	255	1040	324	289	762	702	310	461	52	264	23	513	23	823	12	17
CXRT-N 632/4	132SA4	915	590	515	698	375	450	232	750	450	750	1265	M8X30	255	1040	372	337	762	702	360	461	52	314	23	513	23	873	12	17
CXRT-N 632/6	100LA6	815	590	515	698	375	450	232	750	450	750	1265	M8X30	255	1040	324	289	762	702	295	461	52	249	23	513	23	808	12	17

† With cooling impeller.
* Depending on motor size.



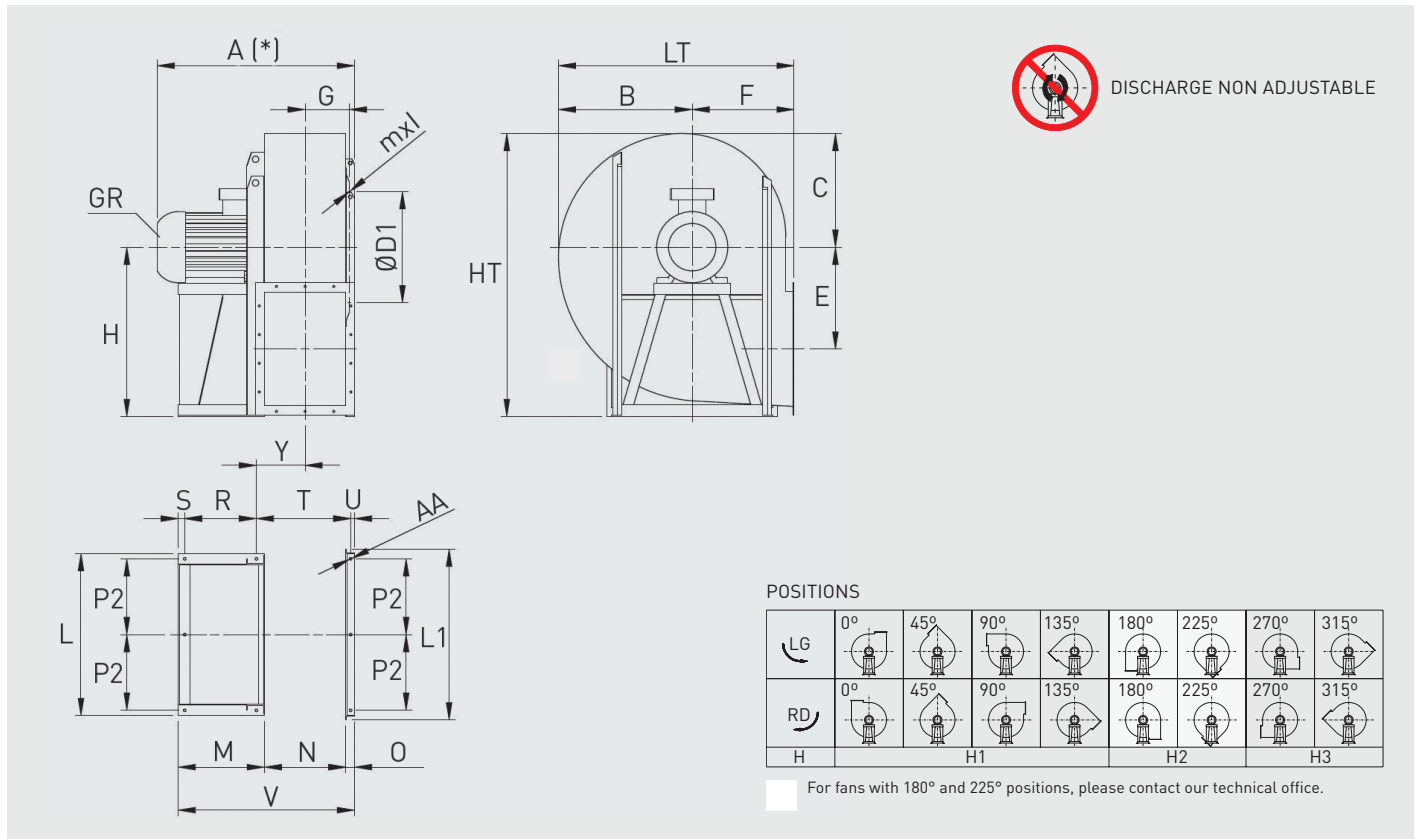
Model	Inlet flange					
	Bride type	Ø D1	Ø D2	Ø D3	Ø AC	Holes
561	560	629	566	666	10	12
631	630	698	636	736	10	12

Model	Discharge flange										
	Bride type	A1	B1	A2	B2	A3	B3	C1	Ø AB	N°X	N°Y
561	560x400	569	404	629	464	669	504	160	14	3+3	4+4
631	630x450	638	453	698	513	738	553	160	14	3+3	4+4

BACKWARD CURVED IMPELLER - DIRECT DRIVE CXRT-N F400 Serie



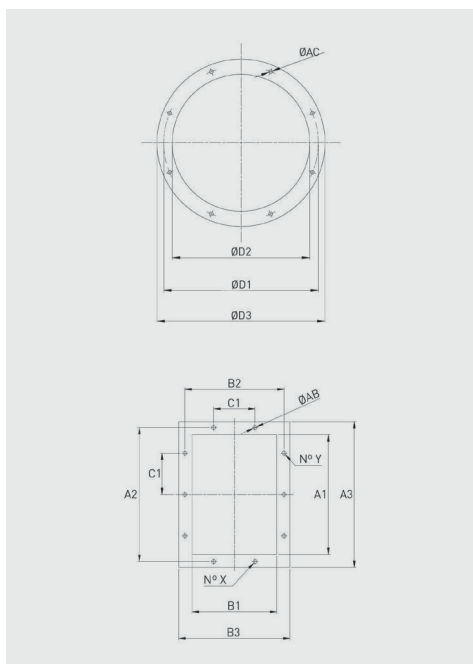
DIMENSIONS (mm) (models from 711 to 1401)



Type	Fan	Motor GR	Fan											Base														
			A*	B	C	ØD1	E	F	G	H			HT	mxl	Y	LT	L	L1	M	N	O	P2	R	S	T	U	V	Ø AA
	CXRT-N 711/4	160L4	1065	665	565	775	431	500	258	670	500	850	1415	M10X30	314	1165	836	896	471	507	60	386	372	39	600	27	1038	19
	CXRT-N 711/6	132MA6	980	665	565	775	431	500	258	670	500	850	1415	M10X30	314	1165	836	896	362	507	60	386	263	39	600	27	929	19
	CXRT-N 712/4	160M4	1065	665	565	775	431	500	258	670	500	850	1415	M10X30	314	1165	836	896	471	507	60	386	372	39	600	27	1038	19
	CXRT-N 712/6	132SA6	980	665	565	775	431	500	258	670	500	850	1415	M10X30	314	1165	836	896	362	507	60	386	263	39	600	27	929	19
	CXRT-N 801/4	180L4	1230	740	630	861	482	560	290	750	560	950	1580	M10X30	345	1300	926	986	540	569	60	431	441	39	662	27	1169	19
	CXRT-N 801/6	160M6	1130	740	630	861	482	560	290	750	560	950	1580	M10X30	345	1300	926	986	471	569	60	431	372	39	662	27	1100	19
	CXRT-N 802/4	180M4	1230	740	630	861	482	560	290	750	560	950	1580	M10X30	345	1300	926	986	540	569	60	431	441	39	662	27	1169	19
	CXRT-N 802/6	132MB6	1045	740	630	861	482	560	290	750	560	950	1580	M10X30	345	1300	926	986	362	569	60	431	263	39	662	27	991	19
	CXRT-N 901/4	225M4	1390	830	705	958	543	630	321	850	630	1060	1765	M10X30	379	1460	1026	1086	540	638	60	481	441	39	731	27	1238	19
	CXRT-N 901/6	180L6	1300	830	705	958	543	630	321	850	630	1060	1765	M10X30	379	1460	1026	1086	543	638	60	481	441	39	731	27	1238	19
	CXRT-N 902/4	225S4	1390	830	705	958	543	630	321	850	630	1060	1765	M10X30	379	1460	1026	1086	540	638	60	481	441	39	731	27	1238	19
	CXRT-N 902/6	160L6	1200	830	705	958	543	630	321	850	630	1060	1765	M10X30	379	1460	1026	1086	474	638	60	481	372	39	731	27	1169	19
	CXRT-N 1001/6	200L6	1435	935	795	1067	610	710	361	950	710	1180	1975	M10X30	413	1645	1128	1188	500	715	60	528	400	45	803	27	1275	19
	CXRT-N 1002/6	200LR6	1435	935	795	1067	610	710	361	950	710	1180	1975	M10X30	413	1645	1128	1188	500	715	60	528	400	45	803	27	1275	19
	CXRT-N 1121/6	250M6	1640	1065	895	1200	683	800	402	1060	800	1320	2215	M10X30	481	1865	1268	1348	600	801	80	589	475	45	926	35	1481	24
	CXRT-N 1122/6	225M6	1574	1065	895	1200	683	800	402	1060	800	1320	2215	M10X30	481	1865	1268	1348	540	801	80	589	415	45	926	35	1421	24
	CXRT-N 1251/6	315S6	1895	1180	1005	1337	770	900	451	1180	900	1500	2505	M10x40	530	2080	1400	1480	816	898	80	655	691	45	1023	35	1794	24
	CXRT-N 1252/6	280M6	1885	1180	1005	1337	770	900	451	1180	900	1500	2505	M10x40	529	2080	1400	1480	690	898	80	655	565	45	1023	35	1668	24
	CXRT-N 1401/6	315MA6	2005	1365	1115	1491	854	1000	506	1320	1000	1700	2815	M10x40	604	2365	1560	1640	800	1007	80	725	645	55	1152	35	1887	24
	CXRT-N 1402/6	315M6	2005	1365	1115	1491	854	1000	506	1320	1000	1700	2815	M10x40	604	2365	1560	1640	800	1007	80	725	645	55	1152	35	1887	24

¹ With cooling impeller.
* Depending on motor size.

DIMENSIONS (mm) (models from 711 to 1401)

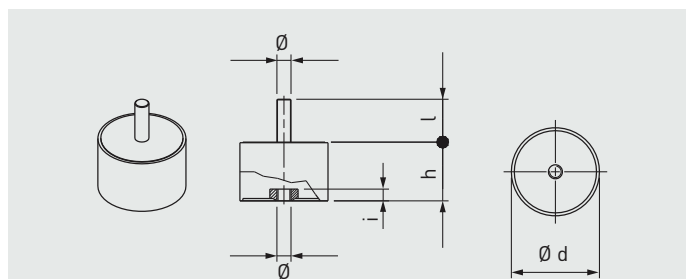


Model	Inlet flange					
	Bride type	Ø D1	Ø D2	Ø D3	Ø AC	Holes
711	710	775	716	816	12	16
801	800	861	806	906	12	16
901	900	958	906	1006	12	16
1001	1000	1067	1007	1107	12	24
1121	1120	1200	1128	1248	12	24
1251	1250	1337	1260	1380	12	24
1401	1400	1491	1420	1540	12	32

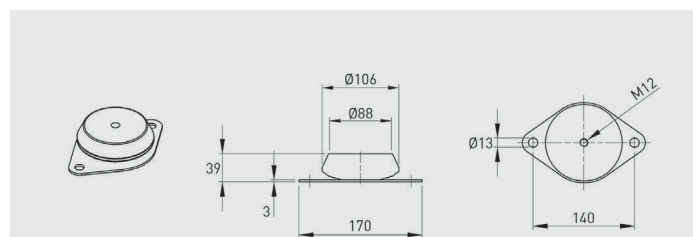
Model	Discharge flange										
	Bride type	A1	B1	A2	B2	A3	B3	C1	Ø AB	N°X	N°Y
711	710x500	715	507	775	567	815	607	160	14	3+3	5+5
801	800x560	801	569	871	639	921	689	200	14	3+3	4+4
901	900x630	898	638	968	708	1018	758	200	14	4+4	5+5
1001	1000x710	1007	715	1077	785	1127	835	200	14	4+4	5+5
1121	1120x800	1130	801	1210	881	1270	941	200	18	4+4	6+6
1251	1250x900	1267	898	1347	978	1407	1038	200	18	5+5	7+7
1401	1400x1000	1421	1007	1501	1087	1561	1147	200	18	5+5	7+7

SILENT BLOCKS

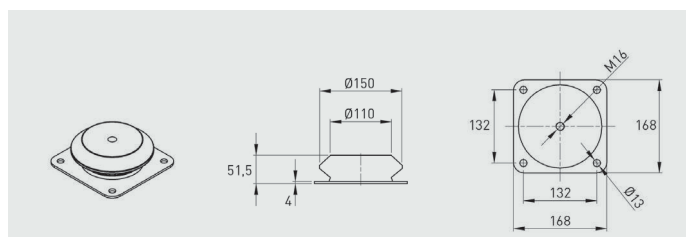
Suggested silent blocks	
Fan	Arrangement 4
251	4 x AM 20 - 20 x 20
281	4 x AM 20 - 20 x 20
311	4 x AM 25 - 25 x 20
351	4 x AM 25 - 25 x 20
401	4 x AM 30 - 30 x 30
451	4 x AM 30 - 30 x 30
501	4 x AM 40 - 40 x 30
561	4 x AM 40 - 40 x 30
631	4 x AM 40 - 40 x 30
711	4 x AM 50 - 50 x 40
801	4 x AM 75 - 75 x 50
901	4 x AM 75 - 75 x 50
1001	6 x AM 75 - 75 x 50
1121	6 x AZ 39 - 140 x 39
1251	6 x AZ 39 - 140 x 39
1401	6 x AZ 51 - 132 x 51



Type	Load for 4 supports (kg)	d	h	Ø	l	Weight (kg)
AM20	11÷40	20	20	M6	15	0,02
AM25	41÷80	25	20	M6	18	0,03
AM30	81÷140	30	30	M8	20	0,05
AM40	141÷224	40	30	M8	23	0,10
AM50	225÷315	50	40	M10	28	0,20
AM75	316÷630	75	50	M12	37	0,50



Type	Load for 4 supports (kg)	Weight (kg)
AZ 39	631÷1250	0,7

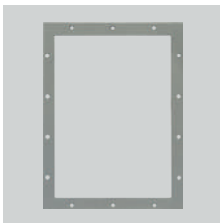


Type	Load for 4 supports (kg)	Weight (kg)
AZ 51	1251÷2500	1,8

MOUNTING ACCESSORIES



CA (CFH1) - CFH2 - CFH3
Counter-flange -
Circular flange.



CP
Rectangular flange.



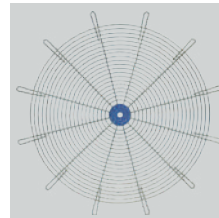
GA
Inlet flexible
connector.



GP
Outlet flexible
connector.



SAD
Air reducing damper
at outlet.



RC
Inlet protection net.



AM/AZ
Silent blocks.



CI
Noise enclosure.



ACOPEL F400 N*
Circular flexible
connector.
Certified F400-120.

For more information see "Mounting accessories".

EXTERNAL ELECTRICAL ACCESSORIES



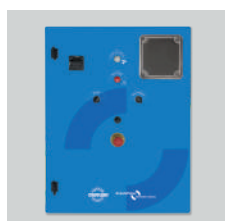
VFTM320
Frequency converter
for three-phase
motors from 0.18 to
15 kW.



VFTM
Frequency converter
for three-phase
motors from 15 to
315 kW.



PRESOSTATO DPS
Differential pressure
switch.



CONTROL BOX
Distribution and
control panel.



DEMZ DA
Switch for 2-speed
motors.



INTZ
ON/OFF electrical
isolation switch.